

Expert CONSULT
PREMIUM

Activate at expertconsult.com

Searchable Full
Text Online

JEAN-LOUIS VINCENT
EDWARD ABRAHAM
FREDERICK A. MOORE
PATRICK M. KOCHANEK
MITCHELL P. FINK

TEXTBOOK OF
CRITICAL CARE
SIXTH EDITION



ELSEVIER
SAUNDERS

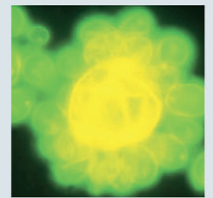
TEXTBOOK OF CRITICAL CARE

TEXTBOOK OF CRITICAL CARE

Sixth Edition

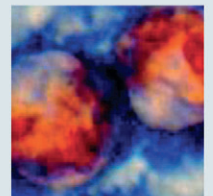
JEAN-LOUIS VINCENT, MD, PhD

Professor of Intensive Care Medicine
Université Libre de Bruxelles
Head, Department of Intensive Care
Erasme University Hospital
Brussels, Belgium



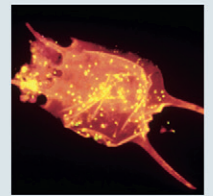
EDWARD ABRAHAM, MD

Professor and Chair
Spencer Chair in Medical Science Leadership
Department of Medicine
University of Alabama at Birmingham
School of Medicine
Birmingham, Alabama



FREDERICK A. MOORE, MD, FACS, FCCM

Professor of Surgery
Head, Acute Care Surgery
College of Medicine
University of Florida
Gainesville, Florida



PATRICK M. KOCHANEK, MD, FCCM

Professor and Vice Chairman
Department of Critical Care Medicine
Professor of Anesthesiology, Pediatrics, and Clinical and Translational Science
Director, Safar Center for Resuscitation Research
University of Pittsburgh School of Medicine
Pittsburgh, Pennsylvania

MITCHELL P. FINK, MD

Professor of Surgery and Anesthesiology
Vice Chair for Critical Care, Department of Surgery
David Geffen School of Medicine
University of California–Los Angeles
Los Angeles, California

ELSEVIER
SAUNDERS

To Hac and Amélie, hoping for better care of the critically ill throughout the world — JEAN-LOUIS VINCENT

To Norma-May, my true love. To Claire and Erin, who bring me the greatest joy, and to my mother, Dale Abraham, for her support throughout my life — EDWARD ABRAHAM

To my father, Ernest E. Moore, who was a family practitioner for 50 years in Butler, Pennsylvania. He inspired me by his dedication to self education, humility, and service to his community — FREDERICK A. MOORE

To my parents, Stella and Julius Kochanek, for leading by example on the value of hard work; to my wife, Denise, and my children, Ashley, Stanton, and Jillian, for their many sacrifices; and to the late Dr. Peter Safar, for encouraging each of us to bring promising new therapies to the bedside of the critically ill — PATRICK M. KOCHANEK

To my two grown-up children, Emily and Matthew; may their lives be as professionally rewarding and personally satisfying as mine has been. To the memory of my parents, Walter and Betty, who taught me the virtues of honesty and hard work. And to Judy Rochlin, who I loved 40 years ago, and love again even more now — MITCHELL P. FINK

CONTRIBUTORS

Edward Abraham, MD

Professor and Chair
Spencer Chair in Medical Science Leadership
Department of Medicine
University of Alabama at Birmingham
School of Medicine
Birmingham, Alabama

Peter Abrams, MD

Fellow in Abdominal Transplantation
Thomas E. Starzl Transplantation Institute
Department of Surgery
University of Pittsburgh School of Medicine
Pittsburgh, Pennsylvania

Kareem Abu-Elmagd, MD

Professor of Surgery
Director of Intestinal Rehabilitation and Transplant Center
Thomas E. Starzl Transplantation Institute
Department of Surgery
University of Pittsburgh School of Medicine
Pittsburgh, Pennsylvania

Yasir Abu-Omar, MBChB, DPhil, FRCS(C-Th)

Department of Cardiothoracic Surgery
Papworth Hospital
Cambridge, United Kingdom

Carlos Agustí, MD, PhD

Pneumology Department
Clinic Institute of Thorax (ICT)
Hospital Clinic of Barcelona-Institut d'Investigacions Biomèdiques
August Pi i Sunyer
University of Barcelona-Ciber de Enfermedades
Barcelona, Spain

William C. Aird, MD

Department of Medicine
Beth Israel Deaconess Medical Center and Harvard Medical School
Boston, Massachusetts

Philip Alapat, MD, DABSM, FCCP

Assistant Professor
Department of Pulmonary, Critical Care, and Sleep Medicine
Baylor College of Medicine
Ben Taub General Hospital
Houston, Texas

Ali H. Al-Khafaji, MD, MPH

Associate Professor and Consultant
Director
Transplant Intensive Care Unit
Department of Critical Care Medicine
University of Pittsburgh School of Medicine
Pittsburgh, Pennsylvania

Gustavo G. Angaramo, MD

Assistant Professor in Anesthesiology and Critical Care Medicine
Department of Anesthesiology
Former Instructor in Cardiothoracic Surgery
Department of Surgery
University of Massachusetts Medical School
Worcester, Massachusetts

Derek C. Angus, MD, MPH, FRCP

Chair, Department of Critical Care Medicine
The Mitchell P. Fink Endowed Chair in Critical Care Medicine
Professor of Critical Care Medicine, Medicine, Health Policy and
Management, and Clinical and Translational Science
University of Pittsburgh School of Medicine and Graduate School
of Public Health
Pittsburgh, Pennsylvania

Anastasia Antoniadou, MD, PhD

Assistant Professor of Internal Medicine and Infectious Diseases
Athens University Medical School
University General Hospital ATTIKON
Athens, Greece

Anupam Anupam, MBBS

Attending Physician, Department of Medicine
Advocate Illinois Masonic Medical Center
Chicago, Illinois

Andrew C. Argent, MBCh (Wits), MMed (Paeds)(Wits), DCH (SA), FCPaeds (SA), FRCPC(UK)

Professor, School of Child and Adolescent Health
University of Cape Town
Medical Director
Paediatric Intensive Care
Red Cross War Memorial Children's Hospital
Cape Town, Western Cape, South Africa

John H. Arnold, MD

Senior Associate
Department of Anesthesia
Medical Director of ECMO, Respiratory Care, and
Biomedical Engineering
Children's Hospital Boston
Associate Professor of Anaesthesia and Pediatrics
Harvard Medical School
Boston, Massachusetts

Anna Arroyo, MD

Department of Medicine
Division of Hospital Medicine
Washington University School of Medicine
St Louis, Missouri

Stephen Ashwal, MD

Distinguished Professor of Pediatrics and Chief of the Division
of Child Neurology
Department of Pediatrics
Loma Linda University School of Medicine
Loma Linda, California

Mark E. Astiz, MD

Chief, Division of Critical Care Medicine
Lenox Hill Hospital
New York, New York
Professor of Medicine
New York Medical College
Westchester County, New York

Elie Azoulay, MD, PhD

AP-HP, Hôpital Saint-Louis
Université Paris-7 Paris-Diderot
UFR de Médecine
Réanimation Médicale
Paris, France

Omer A. Bajwa, MD

Senior Fellow, Department of Critical Care Medicine
University of Pittsburgh
Allegheny General Hospital
Pittsburgh, Pennsylvania

Anthony Baldea, MD

Chief Resident
Department of Surgery
Loyola University Medical Center
Maywood, Illinois

Marie R. Baldisseri, MD, FCCM

Associate Professor of Critical Care Medicine
University of Pittsburgh Medical Center
Pittsburgh, Pennsylvania

Zsolt J. Balogh, MD, PhD, FRACS

Professor of Traumatology
Department of Traumatology
University of Newcastle
John Hunter Hospital
Newcastle, New South Wales, Australia

Rasheed Abiodun Balogun, MD

Associate Professor of Medicine
Division of Nephrology
Medical Director, Renal Unit and Extracorporeal Therapies
University of Virginia Health System
Charlottesville, Virginia

Arna Banerjee, MD

Assistant Professor of Anesthesiology
Assistant Professor of Surgery
Vanderbilt University School of Medicine
Nashville, Tennessee

Philip S. Barie, MD, MBA, FIDSA, FCCM, FACS

Professor of Surgery and Public Health
Weill Cornell Medical College
Chief, Preston A. Wade Acute Care Surgery Service
New York-Presbyterian Hospital/Weill Cornell Medical Center
New York, New York

Brendan Barrett, MB, MSc

Professor of Medicine
Division of Nephrology
Memorial University of Newfoundland
St. John's, Newfoundland, Canada

Robert Bartlett, MD

Professor of Surgery, Emeritus
University of Michigan
Ann Arbor, Michigan

John G. Bartlett, MD

Professor of Medicine
Division of Infectious Diseases
Johns Hopkins University School of Medicine
Baltimore, Maryland

Gianluigi Li Bassi, MD

Researcher
Respiratory Intensive Care Unit
Institut Clinic del Tòrax
Hospital Clinic of Barcelona
Institut d'investigacions Biomèdiques
August Pi i Sunyer
Centro de Investigación Biomedica en
Red Enfermedades Respiratorias
Barcelona, Spain

Sarice L. Bassin, MD

Assistant Professor
Department of Neurology
Northwestern Memorial Hospital
Chicago, Illinois

Julie A. Bastarache, MD

Assistant Professor of Medicine
Division of Allergy, Pulmonary, and Critical Care Medicine
Department of Medicine
Vanderbilt University
Nashville, Tennessee

Colin Bauer, MD

Resident
Department of Anesthesiology
University of California—Los Angeles
Los Angeles, California

Daniel G. Bausch, MD, MPH&TM

Associate Professor
Department of Tropical Medicine and Section of
Adult Infectious Diseases
Tulane University Health Science Center
New Orleans, Louisiana

Hülya Bayır, MD

Associate Professor
Department of Critical Care Medicine
Department of Environmental and Occupational Health
Director, Pediatric Critical Care Medicine Research
Associate Director
Center for Free Radical and Antioxidant Health
Safar Center for Resuscitation Research
Pittsburgh, Pennsylvania

David T. Bearden, PharmD

Clinical Associate Professor
Department of Pharmacy Practice
Oregon State University
Portland, Oregon

Gregory J. Beilman, MD

Professor and Vice Chair of Surgery
Chief of Critical Care/Acute Care Surgery
University of Minnesota
Minneapolis, Minnesota

Rinaldo Bellomo

Department of Intensive Care
Austin Hospital and University of Melbourne
Melbourne, Australia

E. David Bennett, MB, FRCP

Visiting Professor of Intensive Care
Kings College
Honorary Consultant Physician
Intensive Care Unit
St. Thomas' Hospital
London, United Kingdom

Gordon R. Bernard, MD

Professor of Medicine
Associate Vice Chancellor for Research
Vanderbilt University School of Medicine
Nashville, Tennessee

Jay K. Bhama, MD

Division of Cardiothoracic Surgery
University of Pittsburgh School of Medicine
Pittsburgh, Pennsylvania

Joost J.L.M. Bierens, MD

Anesthesiologist
Medical Commission International Life Saving Federation
Advising Governer Maatschappij tot Redding van Drenkelingen
The Netherlands

Walter L. Biffi, MD

Director of Surgery/Trauma Outreach
Assistant Director of Patient Safety and Quality
Denver Health Medical Center
Professor of Surgery
Associate Residency Program Director
University of Colorado
Denver, Colorado

Thomas P. Bleck, MD, FCCM

Professor of Neurological Sciences, Neurosurgery, Medicine,
and Anesthesiology
Assistant Dean
Rush Medical College
Associate Chief Medical Officer for Critical Care
Rush University Medical Center
Chicago, Illinois

Thomas A. Bledsoe, MD

Clinical Assistant Professor
Brown University School of Medicine
Providence, Rhode Island

Karen C. Bloch, MD, MPH

Assistant Professor
Departments of Medicine (Infectious Diseases) and
Preventive Medicine
Vanderbilt University Medical Center
Nashville, Tennessee

Frank Bloos, MD, PhD

Department of Anesthesiology and Intensive Care Medicine
Jena University Hospital
Jena, Germany

Desmond Bohn, MB, FRCP

Chief
Department of Critical Care Medicine
The Hospital for Sick Children
Professor
Anesthesia and Pediatrics
University of Toronto
Toronto, Ontario, Canada

Nicole C. Bouchard, MD, FPCPC

Assistant Clinical Professor
Assistant Site Director
Director of Medical Toxicology
Emergency Medicine
New York-Presbyterian/Columbia University Medical Center
New York, New York

Arthur J. Boujoukos, MD

Professor, Department of Critical Care Medicine
University of Pittsburgh School of Medicine
Medical Director, Cardiothoracic Intensive Care Unit
University of Pittsburgh Medical Center
Pittsburgh, Pennsylvania

William J. Brady, MD

Professor
Department of Emergency Medicine and Medicine
University of Virginia
Operational Medical Director
Charlottesville-Albemarle Rescue and Albemarle County Fire-Rescue
Chair, Resuscitation Committee
University of Virginia
Charlottesville, Virginia

Serge Brimioulle, MD, PhD

Professor
Department of Intensive Care
Erasme Hospital
Free University of Brussels
Brussels, Belgium

Daniel E. Brooks, MD

Co-Medical Director
Banner Good Samaritan Poison and Drug Information Center
Department of Medical Toxicology
Banner Good Samaritan Medical Center
Phoenix, Arizona

Richard C. Brundage, PharmD, PhD

Distinguished University Teaching Professor
Experimental and Clinical Pharmacology
University of Minnesota
Minneapolis, Minnesota

Jeffrey P. Burns, MD, MPH

Chief
Division of Critical Care Medicine
Children's Hospital Boston
Associate Professor of Anaesthesia
Harvard Medical School
Boston, Massachusetts

Belén Cabello, MD

Unidad de Cuidados Intensivos
Hospital de Antequera
Antequera, Spain

Karen H. Calhoun, MD, FACS, FFAOA

Professor
Department of Otolaryngology, Head and Neck Surgery
The Ohio State University Medical Center
Columbus, Ohio

Clifton W. Callaway, MD, PhD

Associate Professor
Department of Emergency Medicine
Safar Center for Resuscitation Research
University of Pittsburgh
Pittsburgh, Pennsylvania

Peter M.A. Calverley, MBChB

Professor of Respiratory Medicine
School of Clinical Sciences
University of Liverpool
Liverpool, United Kingdom

John Camm, MD

Professor of Clinical Cardiology
St. George's University of London
Honorary Consultant Cardiologist
St. George's Healthcare Trust
London, United Kingdom

Diane M. Cappelletty, PharmD

Associate Professor
Pharmacy Practice
The University of Toledo
Toledo, Ohio

Joseph A. Carcillo, MD

Associate Professor of Critical Care Medicine and Pediatrics
Children's Hospital of Pittsburgh of UPMC
University of Pittsburgh School of Medicine
Pittsburgh, Pennsylvania

Anthony J. Carlese, DO, FCCP

Division of Critical Care Medicine
Montefiore Medical Center and the Albert Einstein College
of Medicine
Bronx, New York

Juan Carlos-Puyana, MD

Department of Surgery
University of Pittsburgh
Pittsburgh, Pennsylvania

Franco A. Carnevale, RN, PhD

Associate Professor
School of Nursing
McGill University
Associate Member
Pediatric Critical Care
Montreal Children's Hospital
Montreal, Quebec, Canada

Edward D. Chan, MD

Associate Professor of Medicine
National Jewish Health
Staff Physician
Denver Veterans Affairs Medical Center
Denver, Colorado
Staff Physician
University of Colorado Denver
Anschutz Medical Center
Aurora, Colorado

Sanjay Chawla, MD, FCCP

Assistant Professor of Medicine
Weill Cornell Medical College
Assistant Attending Physician
Critical Care Medicine Service
Department of Anesthesiology and Critical Care Medicine
Memorial Sloan-Kettering Cancer Center
New York, New York

Lakshmi pathi Chelluri, MD

Associate Professor
Departments of Critical Care Medicine and Medicine
University of Pittsburgh Medical Center
Pittsburgh, Pennsylvania

David C. Chen, MD

Assistant Clinical Professor
Department of Surgery
University of California—Los Angeles
Los Angeles, California

Annie S. Chevrier, RN, MScA

Clinical Nurse Specialist
Internal Medicine, Medical Mission
McGill University Health Centre
Montreal, Quebec, Canada

Su Min Cho, MD, MRCP(UK)

Division of Gastroenterology, Hepatology, and Nutrition
University of Pittsburgh School of Medicine
Pittsburgh, Pennsylvania

Robert S.B. Clark, MD

Professor and Chief, Division of Pediatric Critical Care Medicine
Children's Hospital of Pittsburgh of UPMC
Associate Director
Safar Center for Resuscitation Research
University of Pittsburgh
Pittsburgh, Pennsylvania

Michael A. Coady, MD

Attending Cardiac Surgeon
Heart and Vascular Institute
Stamford Hospital
Stamford, Connecticut

Stephen M. Cohn, MD, FACS

Witten B. Russ Professor of Surgery
University of Texas Health Science Center
San Antonio, Texas

Alan D. Cook, MD

Trauma Surgeon
Trauma Services
East Texas Medical Center
Tyler, Texas

Deborah J. Cook, MD, FRCPC, MSc(Epi)

Professor
 Department of Medicine, Clinical Epidemiology, and Biostatistics
 Academic Chair, Critical Care Medicine
 McMaster University
 Hamilton, Ontario, Canada

Robert N. Cooney, MD, FACS, FCCM

Professor of Surgery
 Department of Surgery
 SUNY Upstate Medical University
 Syracuse, New York

Susan J. Corbridge, PhD, ACNP, AE-C, FAANP

Clinical Assistant Professor of Nursing
 Clinical Assistant Professor of Medicine
 Coordinator, Acute Care Nurse Practitioner Program
 University of Illinois at Chicago
 Chicago, Illinois

Thomas C. Corbridge, MD, FCCP

Professor of Medicine
 Professor of Physical Medicine and Rehabilitation
 Department of Medicine
 Northwestern University Feinberg School of Medicine
 Chicago, Illinois

Howard L. Corwin, MD

Professor of Medicine and Anesthesiology
 Dartmouth Medical School
 Hanover, New Hampshire

Mark A. Crowther, MD, MSc, FRCPC

Professor
 Department of Medicine
 McMaster University
 St. Joseph's Hospital
 Hamilton, Ontario, Canada

Burke A. Cunha, MD, MACP

Chief, Infectious Disease Division
 Winthrop-University Hospital
 Mineola, New York
 Professor of Medicine
 State University of New York School of Medicine
 Stony Brook, New York

Cheston B. Cunha, MD

Department of Medicine
 Brown University Alpert School of Medicine
 Rhode Island Hospital and The Miriam Hospital
 Providence, Rhode Island

J. Randall Curtis, MD, MPH

Professor of Medicine
 Section Head, Pulmonary and Critical Care Medicine
 Harborview Medical Center
 University of Washington
 Seattle, Washington

Vincenzo D'Intini, MD

Renal Medicine
 Royal Brisbane and Women's Hospital
 Brisbane, Queensland, Australia

Pirouz Daeihagh, MD

Associate Professor of Internal Medicine-Nephrology
 Wake Forest University Baptist
 Winston Salem, North Carolina

Joseph M. Darby, MD

Professor of Critical Care Medicine and Surgery
 University of Pittsburgh School of Medicine
 Medical Director, Trauma ICU
 UPMC-Presbyterian Hospital
 Pittsburgh, Pennsylvania

James M. Dargin, MD

Fellow
 Critical Care Medicine
 University of Pittsburgh Medical Center
 Pittsburgh, Pennsylvania

Michaël Darmon, MD, PhD

Attending Physician
 Medical-Surgical ICU
 Saint-Etienne University Hospital
 Jean Monnet University
 Saint-Priest-en-Jarez
 France

Joseph F. Dasta, MSc, FCCM, FCCP

Professor Emeritus
 The Ohio State University
 College of Pharmacy
 Columbus, Ohio

John D. Davies, MA, RRT, FAARC

Clinical Research Coordinator
 Duke University Medical Center
 Durham, North Carolina

Robert W. Derlet, MD

Professor
 Emergency Medicine
 University of California–Davis
 Davis, California

Mark Dershwitz, MD, PhD

Professor and Vice Chair of Anesthesiology
 Professor of Biochemistry and Molecular Pharmacology
 University of Massachusetts
 Worcester, Massachusetts

Anne Marie G.A. de Smet, MD, PhD

Department of Intensive Care
 Onze Lieve Vrouwe Gasthuis
 Amsterdam, The Netherlands

Monica Dhand, MD

Tulane University School of Medicine
 New Orleans, Louisiana

Anahat Dhillon, MD

Assistant Clinical Professor
 Department of Anesthesiology and Critical Care Medicine
 University of California–Los Angeles
 Los Angeles, California

Rajeev Dhupar, MD

Resident, General Surgery
University of Pittsburgh Medical Center
Pittsburgh, Pennsylvania

Michael N. Diring, MD, FCCM, FAHA

Professor of Neurology, Neurosurgery, and Anesthesiology
Director, Neurology/Neurosurgery Intensive Care Unit
Washington University School of Medicine
St. Louis, Missouri

Peter Doelken, MD

Assistant Professor
Division of Pulmonology, Allergy, and Clinical Immunology
Medical University of South Carolina
Charleston, South Carolina

Michael Donahoe, MD

Associate Professor of Medicine
Division of Pulmonary, Allergy, and Critical Care Medicine
University of Pittsburgh School of Medicine
Pittsburgh, Pennsylvania

Timothy R. Donahue, MD

Assistant Professor
Departments of Surgery and Molecular and Medical Pharmacology
David Geffen School of Medicine
University of California—Los Angeles
Los Angeles, California

David J. Dries, MSE, MD

Assistant Medical Director of Surgical Care
HealthPartners Medical Group
Professor of Surgery and Anesthesiology
John F. Perry, Jr. Chair of Trauma Surgery
University of Minnesota
Minneapolis, Minnesota

Thomas D. DuBose Jr., MD

Tinsley R. Harrison Professor and Chair
Department of Internal Medicine
Wake Forest University School of Medicine
Winston-Salem, North Carolina

Susan Duthie, MD

Associate Medical Director
Pediatric Critical Care
UCSD-Rady Children's Hospital
San Diego, California

Randy Edwards, MD

Department of Surgery
Medical Director - Advanced Practitioners
Director - Outpatient Surgical Services
Surgical Critical Care
Hartford Hospital
Hartford, Connecticut

Philippe Eggimann, MD

Adult Critical Care
Centre Hospitalier Universitaire Vaudois
Lausanne, Switzerland

Waleed A. Elhassan, MD

Renal Fellow
University of Colorado Denver
Aurora, Colorado

E. Wesley Ely, MD, MPH

Professor of Medicine
Department of Allergy, Pulmonary, and Critical Care Medicine
Vanderbilt University Medical Center
Associate Director of Research GRECC
Tennessee Valley HealthCare System
Nashville, Tennessee

Guillaume Emeriaud, MD, PhD

Pediatric Intensivist
Assistant Clinical Professor
Department of Pediatrics
CHU Sainte-Justine
Université de Montréal
Montreal, Quebec, Canada

Gregory A. Eschenauer, PharmD, BCPS

Clinical Pharmacist, Infectious Diseases
Antibiotic Management Program
University of Pittsburgh Medical Center
Pittsburgh, Pennsylvania

Joel H. Ettinger

President and CEO
Category One Inc.
Pittsburgh, Pennsylvania

Joshua H. Ettinger, MBA

Executive Vice President
Category One, Inc.
Pittsburgh, Pennsylvania
President and CEO
The Magellan Institute, LLC
Louisville, Kentucky

David Clay Evans, MD

Clinical Instructor-Housestaff
Department of Surgery
The Ohio State University
Columbus, Ohio

Gregory T. Everson, MD

Professor of Medicine
School of Medicine
University of Colorado Denver
Director of Hepatology
Division of Gastroenterology and Hepatology
University of Colorado Denver
Aurora, Colorado

Derek V. Exner, MD, MPH, FRCPC, FACC, FHRS

Professor
Libin Cardiovascular Institute of Alberta
University of Calgary
Calgary, Alberta, Canada

Ronald J. Falk, MD

Doc J. Thurston Professor of Medicine
University of North Carolina
Director, UNC Kidney Center
Chief, Division of Nephrology and Hypertension
Chapel Hill, North Carolina

Jeremy Farrar, MBBS, FRCP, PhD

Clinical Reader University of Oxford
Director University of Oxford Research Unit
The Hospital of Tropical Diseases
Ho Chi Minh City, Vietnam

Alan P. Farwell, MD

Associate Professor of Medicine
Boston University School of Medicine
Director, Endocrine Clinics
Section of Endocrinology, Diabetes, and Nutrition
Boston Medical Center
Boston, Massachusetts

Kathryn Felmet, MD

Assistant Professor of Critical Care Medicine and Pediatrics
University of Pittsburgh School of Medicine
Medical Director
Critical Care Transport Team
Children's Hospital of Pittsburgh
Pittsburgh, Pennsylvania

Niall D. Ferguson, MD, MSc

Director, Critical Care Medicine
University Health Network and Mount Sinai Hospital
Assistant Professor
Interdepartmental Division of Critical Care Medicine
University of Toronto
Toronto, Ontario, Canada

Miguel Ferrer, MD, PhD

Assistant Professor of Medicine
University of Barcelona
Attending Physician
Respiratory Intensive Care Unit
Institut Clínic del Tòrax
Hospital Clínic, Barcelona, Spain
Institut D'investigacions Biomèdiques August Pi i Sunyer
Centro de Investigación Biomédica en Red
Enfermedades Respiratorias
Barcelona, Spain

Mitchell P. Fink, MD

Professor of Surgery and Anesthesiology
Vice Chair for Critical Care
Department of Surgery
David Geffen School of Medicine
University of California—Los Angeles
Los Angeles, California

Ericka L. Fink, MD

Assistant Professor
Division of Pediatric Critical Care Medicine
Children's Hospital of Pittsburgh of UPMC
Pittsburgh, Pennsylvania

Douglas N. Fish, PharmD

Professor and Chair
Department of Clinical Pharmacy
University of Colorado Anschutz Medical Campus
Clinical Specialist in Critical Care/Infectious Diseases
Department of Pharmacy
University of Colorado Hospital
Aurora, Colorado

Diana F. Florescu, MD

Assistant Professor of Medicine
Department of Internal Medicine
University of Nebraska Medical Center
Omaha, Nebraska

Brett E. Fortune, MD

Gastroenterology/Hepatology Fellow
Division of Gastroenterology and Hepatology
University of Colorado Denver
Aurora, Colorado

Bradley D. Freeman, MD

Professor of Surgery
Washington University School of Medicine
St. Louis, Missouri

Blake Froberg, MD

Assistant Professor of Pediatrics and Emergency Medicine
Indiana University School of Medicine
Indianapolis, Indiana

John J. Fung, MD, PhD

Director, Cleveland Clinic Transplant Center
Chairman, Department of General Surgery
The Cleveland Clinic
Cleveland, Ohio

Brent Furbee, MD

Department of Emergency Medicine
Division of Medical Toxicology
Indiana University School of Medicine
Indianapolis, Indiana

Richard L. Gamelli, MD, FACS

Dean
Stritch School of Medicine
Loyola University Chicago
The Robert J. Freeark Professor of Surgery
Department of Surgery
Loyola University Medical Center
Chief, Burn Center
Department of Surgery
Loyola University Medical Center
Maywood, Illinois

Raúl J. Gazmuri, MD, PhD

Professor of Medicine
Associate Professor of Physiology and Biophysics
Director
Resuscitation Institute
Rosalind Franklin University of Medicine and Science
Section Chief
Department of Critical Care Medicine
Captain James Lovell Federal Health Care Center
North Chicago, Illinois

Robert H. Geelkerken, MD, PhD

Consultant Vascular Surgery
Medisch Spectrum Twente
Enschede, The Netherlands

Todd W.B. Gehr, MD

Professor of Medicine
Vice Chairman of Internal Medicine
Chairman, Division of Nephrology
Virginia Commonwealth University
Richmond, Virginia

Michael A. Gentile, RRT, FAARC, FCCM

Associate in Research
Division of Pulmonary and Critical Care Medicine
Duke University Medical Center
Durham, North Carolina

M. Patricia George, MD

Assistant Professor of Medicine
Department of Medicine (Pulmonary, Allergy, and
Critical Care Medicine)
University of Pittsburgh
Pittsburgh, Pennsylvania

Herwig Gerlach, MD, PhD

Professor and Chairman
Department of Anesthesiology and Critical Care Medicine
Vivantes—Klinikum Neukoelln
Berlin, Germany

R. Mark Ghobrial, MD, PhD, FACS, FRCS (Ed)

Director, Center for Liver Disease and Transplantation
Director, Immunobiology Research Center
The Methodist Hospital
Houston, Texas
Professor of Surgery
Weill-Cornell Medical College
New York, New York

Helen Giamarellou, MD, PhD

Professor of Internal Medicine and Infectious Disease
Athens University Medical School
Head, 6th Department of Internal Medicine
Hygeia Hospital
Athens, Greece

Fredric Ginsberg, MD, FACC, FCCP

Assistant Professor of Medicine
Robert Wood Johnson Medical School at Camden
University of Medicine and Dentistry of New Jersey
Director, Nuclear Cardiology
Director, Heart Failure Program
Cooper University Hospital
Camden, New Jersey

Thomas G. Gleason, MD, MS

Associate Professor of Cardiothoracic Surgery
University of Pittsburgh School of Medicine
Pittsburgh, Pennsylvania

Jacques P. Goldstein, MD, PhD, FECTS

Principal Consultant
Cardio Gold Consulting
Bruxelles, Belgium

Hernando Gomez, MD

Instructor in Critical Care Medicine
University of Pittsburgh
Pittsburgh, Pennsylvania

Sherilyn Gordon Burroughs, MD, FACS

Department of Surgery
Weill Medical College of Cornell University, The Methodist Hospital
Methodist Transplant Center
Houston, Texas

Jeremy David Gradon, MD

Associate Professor of Medicine
The Johns Hopkins University School of Medicine
Attending Physician
Department of Medicine
Division of Infectious Diseases
Sinai Hospital of Baltimore
Baltimore, Maryland

Cornelia R. Graves, MD

Director of Perinatal Services
Obstetrics and Gynecology
Baptist Hospital
Medical Director
Tennessee Maternal Fetal Medicine
Clinical Professor
Obstetrics and Gynecology
Vanderbilt University
Nashville, Tennessee

Cesare Gregoretti, MD

Patient-Ventilator Interaction
DEA
CTO-M. Adelaide
Respiratory Mechanics
DEA
CTO-M. Adelaide
Torino, Italy

Jeffrey S. Groeger, MD

Chief, Urgent Care Service
Memorial Sloan Kettering Cancer Center
Professor of Medicine
Weill Medical College of Cornell University
New York, New York

R. Michael Grounds, MD

Reader in Intensive Care Medicine
St. George's Hospital
London, United Kingdom

Paul O. Gubbins, PharmD

Professor and Chair
Department of Pharmacy Practice
University of Arkansas for Medical Sciences College of Pharmacy
Little Rock, Arkansas

Kyle J. Gunnerson, MD

Associate Professor
Anesthesiology and Emergency Medicine
Associate Director, Center for Adult Critical Care
Director of Critical Care Anesthesiology
VCU Medical Center
Richmond, Virginia

Fahim A. Habib, MD FACS

Attending Trauma Surgeon
Ryder Trauma Center
Jackson Memorial Hospital
Director, Department of Critical Care
University of Miami Hospital
Assistant Professor of Surgery
DeWitt Daughtry Department of Surgery
University of Miami, Miller School of Medicine
Miami, Florida

Mitchell L. Halperin, MD, FRCPC, FRS

Department of Medicine
Division of Nephrology
St. Michaels Hospital
University of Toronto
Toronto, Ontario, Canada

Mary E. Hartman, MD, MPH

Pediatric Critical Care Medicine
Washington University
St. Louis, Missouri

Maurene A. Harvey, RN, MPH

Educator and consultant
Consultants in Critical Care Inc.
Glenbrook, Nevada

Moustafa A. Hassan, MD, FACS

Associate Professor of Surgery
SUNY Upstate Medical University
Syracuse, New York

Yoshiro Hayashi, MD, PhD

Department of Intensive Care Medicine
Royal Brisbane and Women's Hospital
University of Queensland Centre for Clinical Research
Brisbane, Australia

Jan A. Hazelzet, MD, PhD, FCCM

Assistant Professor
Pediatric Intensive Care
Erasmus MC
Rotterdam, The Netherlands

Stephen O. Heard, MD

Chairman
Department of Anesthesiology
Professor of Anesthesiology and Surgery
University of Massachusetts Medical School
Worcester, Massachusetts

Paul C. Hébert, MD

University of Ottawa Centre for Transfusion Research
Clinical Epidemiology Program of the Ottawa Health Research
Institute
Department of Medicine
Ottawa Hospital
Ottawa, Ontario, Canada

Elizabeth D. Hermsen, PharmD, MBA, BCPS-ID

Antimicrobial Stewardship Program Coordinator
Pharmacy Relations and Clinical Decision Support
The Nebraska Medical Center
Adjunct Assistant Professor
Pharmacy Practice
University of Nebraska Medical Center, College of Pharmacy
Adjunct Assistant Professor
Department of Internal Medicine, Section of Infectious Diseases
University of Nebraska Medical Center, College of Medicine
Omaha, Nebraska

Daren K. Heyland, MD

Professor of Medicine
Queen's University
Director of Clinical Evaluation Research Unit
Kingston General Hospital
Kingston, Ontario, Canada

Jonathan R. Hiatt, MD

Professor and Chief
Division of General Surgery
Vice Chair for Education
Department of Surgery
David Geffen School of Medicine at UCLA
Los Angeles, California

Robert W. Hickey, MD

Emergency Department
Children's Hospital of Pittsburgh of UPMC
Pittsburgh, Pennsylvania

Tran Tinh Hien, MD

Professor
Hospital for Tropical Diseases
London, United Kingdom

Thomas L. Higgins, MD, MBA, FACP, FCCM

Interim Chairman
Department of Medicine
Baystate Medical Center
Springfield, Massachusetts
Professor of Medicine, Surgery, and Anesthesiology
Tufts University School of Medicine
Boston, Massachusetts

Nicholas S. Hill, MD

Chief
Division of Pulmonary, Critical Care, and Sleep Medicine
Tufts Medical Center
Professor of Medicine
Tufts University School of Medicine
Boston, Massachusetts

Horacio Hojman, MD, FACS

Associate Trauma Director
Department of Surgery
Tufts Medical Center
Assistant Professor
Department of Surgery
Tufts Medical School
Boston, Massachusetts

Steven M. Hollenberg, MD

Professor of Medicine
Robert Wood Johnson Medical School/UMDNJ
Director, Coronary Care Unit
Cooper University Hospital
Camden, New Jersey

J. Terrill Huggins, MD

Assistant Professor of Medicine
Department of Medicine
Division of Pulmonary, Critical Care, Allergy, and Sleep Medicine
Medical University of South Carolina
Charleston, South Carolina

David T. Huang, MD, MPH

Assistant Professor
Departments of Critical Care Medicine and Emergency Medicine
University of Pittsburgh
Attending Physician
University of Pittsburgh Medical Center
Pittsburgh, Pennsylvania

Christopher G. Hughes, MD

Assistant Professor of Anesthesiology
Vanderbilt University School of Medicine
Nashville, Tennessee

Russell D. Hull, MBBS, MSc, FRCPC, FACP, FCCP

Professor of Medicine, Hematology, and Internal Medicine
Director, Thrombosis Research Unit
University of Calgary
Calgary, Alberta, Canada

Margaret Isaac, MD

Acting Instructor
General Internal Medicine and Palliative Care
University of Washington/Harborview Medical Center
Seattle, Washington

James P. Isbister, MB, BS, BSc, FRACP, FRCPA

Clinical Professor of Medicine
Northern Clinical School
Royal North Shore Hospital
Sydney Medical School
St. Leonards, New South Wales, Australia

Connie Jastremski, RN, MS, MBA, FCCM

Network CNO/VP, Patient Care Services
Bassett Healthcare Network
Cooperstown, New York

Larry Jenkins, PhD

Associate Professor, Department of Neurosurgery
University of Pittsburgh School of Medicine
Pittsburgh, Pennsylvania

Paul Jodka, MD, FCCP

Baystate Health System
Springfield, Massachusetts
Intensivist, Adult Intensive Care Unit
Associate Professor of Medicine, Anesthesiology, and Surgery
Tufts University School of Medicine
Boston, Massachusetts

Robert G. Johnson, MD

C. Rollins Hanlon Professor and Chair
Department of Surgery
Saint Louis University
St. Louis, Missouri

Philippe G. Jorens, MD, PhD

Professor in Critical Care Medicine and Clinical
Pharmacology/Toxicology
Department of Critical Care Medicine
Antwerp University Hospital (UZA)
University of Antwerp
Edegem, Belgium

Vern C. Juel, MD

Associate Professor of Medicine
Division of Neurology
Duke University School of Medicine
Durham, North Carolina

Rose Jung, PharmD, MPH, BCPS

Clinical Associate Professor
Department of Pharmacy Practice
The University of Toledo
Toledo, Ohio

Christina R. Kahl, MD, PhD

Fellow in Nephrology and Hypertension
UNC Kidney Center
University of North Carolina
Chapel Hill, North Carolina

Andre C. Kalil, MD

Associate Professor of Medicine
Department of Internal Medicine
University of Nebraska Medical Center
Omaha, Nebraska

Edo Kaluski, MD, FACC, FESC, FSCAI

Associate Professor of Medicine
University of Medicine and Dentistry of New Jersey
Director of Cardiac Catheterization Laboratories and
Interventional Cardiology
University Hospital
Newark, New Jersey

Kamel S. Kamel, MBBCh

Division of Nephrology
St. Michael's Hospital
University of Toronto
Toronto, Canada

Sandra Kane-Gill, PharmD, MSc, FCCM, FCCP

Associate Professor
School of Pharmacy and Clinical Translational Science Institute
Center for Pharmacoinformatics and Outcomes Research
University of Pittsburgh
Critical Care Medication Safety Officer
Department of Pharmacy
University of Pittsburgh Medical Center
Pittsburgh, Pennsylvania

Jeffrey P. Kanne, MD

Associate Professor
Department of Radiology
University of Wisconsin School of Medicine and Public Health
Madison, Wisconsin

Lionel Karlin, MD

Department of Clinical Immunology
Hôpital Saint-Louis
Assistance Publique-Hôpitaux de Paris
Paris, France

Marinka Kartalija, MD

Infectious Diseases Research Fellow
University of Colorado Anschutz Medical Campus
Denver Veterans Affairs Medical Center
Denver, Colorado

James Kasiewicz, MD

Surgeon
Lawnwood Regional Treasure Coast Trauma Center
Fort Pierce, Florida
University of Pittsburgh Medical Center
Pittsburgh, Pennsylvania

Kenneth D. Katz, MD, FAAEM, FACMT, ABMT

Chief, Division Medical Toxicology
Assistant Professor
UPMC Presbyterian Hospital
Medical Director
Pittsburgh Poison Center
Pittsburgh, Pennsylvania

David Kaufman, MD

Associate Professor
Department of Surgery, Anesthesiology, Medicine, Medical
Humanities, Urology
University of Rochester
Rochester, New York

John A. Kellum, MD

Professor and Vice Chair
Critical Care Medicine
University of Pittsburgh
Pittsburgh, Pennsylvania

Rick Kingston, PharmD

President, Regulatory and Scientific Affairs
Senior Clinical Toxicologist
SafetyCall International Poison Center
Clinical Professor of Pharmacy
College of Pharmacy
University of Minnesota
Minneapolis, Minnesota

Orlando C. Kirton, MD, FACS, FCCM, FCCP

Professor of Surgery
Program Director
Integrated General Surgery Residency Program
Vice Chair
Department of Surgery
University of Connecticut School of Medicine
Farmington, Connecticut

Kurt Kleinschmidt, MD

Professor of Surgery
Division of Emergency Medicine
University of Texas Southwestern Medical Center
Section Chief and Program Director
Medical Toxicology
Dallas, Texas

Jason Knight, MD

Emergency Department Medical Director
Maricopa Medical Center
Phoenix, Arizona

Patrick M. Kochanek, MD, FCCM

Professor and Vice Chairman
Department of Critical Care Medicine
Professor of Anesthesiology, Pediatrics, and Clinical and
Translational Science
Director
Safar Center for Resuscitation Research
University of Pittsburgh School of Medicine
Pittsburgh, Pennsylvania

W. Andrew Kofke, MD, MBA, FCCM

Professor, Director of Neuroanesthesia
Co-Director Neurocritical Care
Department of Anesthesiology and Critical Care
Department of Neurosurgery
University of Pennsylvania
Philadelphia, Pennsylvania

Jeroen J. Kolkman, MD, PhD

Gastroenterologist
Department of Gastroenterology
Medisch Spectrum Twente
Enschede, The Netherlands

Robert L. Kormos, MD, FRCS(C), FAHA

Director, Artificial Heart Program
Co-Director, Heart Transplantation
Medical Director, Vital Engineering
University of Pittsburgh Medical Center
Professor, Department of Surgery
University of Pittsburgh School of Medicine
Pittsburgh, Pennsylvania

Rosemary A. Kozar, MD, PhD

Professor of Surgery
Division of Acute Care Surgery
University of Texas—Houston
Houston, Texas

David J. Kramer, MD, FACP

Professor of Medicine
Mayo Clinic College of Medicine
Director, Transplant Critical Care Service
Mayo Clinic
Jacksonville, Florida

John W. Kreit, MD

Professor of Medicine
Division of Pulmonary, Allergy, and Critical Care Medicine
University of Pittsburgh School of Medicine
Pittsburgh, Pennsylvania

James A. Kruse, MD

Clinical Professor of Medicine
Columbia University College of Physicians and Surgeons
Chief, Critical Care Services
Bassett Medical Center
Cooperstown, New York

Anand Kumar, MD

Associate Professor of Medicine, Medical Microbiology, and
Pharmacology/Therapeutics
University of Manitoba
Associate Professor of Medicine
University of Medicine and Dentistry of New Jersey
Newark, New Jersey

Vladimir Kvetan, MD, FCCM

Director, Jay B. Langner Critical Care System
Montefiore Medical Center
Director
Division of Critical Care Medicine
Department of Medicine
Professor of Anesthesiology and Clinical Medicine
Albert Einstein College of Medicine of Yeshiva University
Bronx, New York

Jacques Lacroix, MD, FRCPC, FAAP

Professor
Department of Pediatrics
Université de Montréal
Montréal, Québec, Canada

Gilles Lebuffe, MD, PhD

Professor
Department of Anesthesiology and Critical Care
University Hospital—Nord de France
Lille, France

Virginie Lemiale, MD

AP-HP, Hôpital Saint-Louis
Réanimation Médicale
1 Avenue Claude Vellefaux
Paris, France

Angela M. Leung, MD, MSc

Instructor of Medicine
Section of Endocrinology, Diabetes, and Nutrition
Boston University School of Medicine
Boston, Massachusetts

Sharon Leung, MD

Division of Critical Care Medicine
Montefiore Medical Center and the Albert Einstein College
of Medicine
Bronx, New York

Allan D. Levi, MD, PhD, FACS

Professor of Neurosurgery
University of Miami, Miller School of Medicine
Chief of Neurosurgery
University of Miami Hospital
Miami, Florida

Phillip D. Levin, MA, MB, BChir

Attending Physician
Department of Anesthesiology and Critical Care Medicine
Hadassah Hebrew University Medical Center
Jerusalem, Israel

Mitchell M. Levy, MD

Professor of Medicine
Chief
Division of Pulmonary and Critical Care Medicine
Department of Medicine
Brown University
Director MICU
Rhode Island Hospital
Providence, Rhode Island

Mah Chou Liang, MD

Interdepartmental Division of Critical Care
University of Toronto
Toronto, Ontario, Canada
Department of Anaesthesia and Surgical Intensive Care Unit
Changi General Hospital
Singapore

Scott Liebman, MD, MPH

Assistant Professor of Medicine
Division of Nephrology
University of Rochester
Rochester, New York

Stuart L. Linas, MD

Professor of Medicine and Rocky Mountain Professor
of Renal Research
University of Colorado Denver School of Medicine
Chief of Nephrology
Denver Health Medical Center
Denver, Colorado

Gregory Y.H. Lip, MD, FRCP, FESC, FACC

Professor of Cardiovascular Medicine
University of Birmingham
Visiting Professor of Haemostasis Thrombosis and Vascular Sciences
University of Aston
Centre for Cardiovascular Sciences
City Hospital
Birmingham, United Kingdom

Pamela A. Lipsett, MD

Professor of Surgery, Anesthesiology and Critical Care Medicine,
and Nursing
Johns Hopkins University Schools of Medicine and Nursing
Co-Director, General Surgery Intensive Care Units
Program Director, General Surgery and Surgical Critical Care
Johns Hopkins
Baltimore, Maryland

Alan Lisbon, MD

Associate Professor of Anaesthesia
Harvard Medical School
Executive Vice Chair Anesthesia
Beth Israel Deaconess Medical Center
Boston, Massachusetts

Carmen Lucena, MD

Beca Josep Font. Hospital Clinic
Barcelona, Spain

Andrew I.R. Maas, MD, PhD

Professor and Chairman
University Hospital Antwerp
Antwerp, Belgium

Neil R. MacIntyre, MD

Professor of Medicine
Clinical Chief
Division of Pulmonary and Critical Care Medicine
Duke University
Durham, North Carolina

Duncan Macrae, MB ChB, FRCA, FRCPCH

Consultant Pediatric Intensivist
Royal Brompton and Harefield NHS Trust
London, United Kingdom

Bernhard Maisch, MD, FESC, FACC

Professor and Director
Department of Cardiology
Marburg Heart Center
Marburg, Germany

Amer M. Malik, MD, MBA

Vascular Neurology Fellow
UPMC Stroke Institute
University of Pittsburgh School of Medicine
Pittsburgh, Pennsylvania

Jordi Mancebo, MD

Director
 Servei Medicina Intensiva
 Hospital Sant Pau
 Associate Professor of Medicine
 Barcelona, Spain

Henry J. Mann, PharmD, FCCP, FCCM, FASHP

Dean and Professor
 Leslie Dan Faculty of Pharmacy
 University of Toronto
 Toronto, Ontario, Canada

Sanjay Manocha, MD, FRCPC

Director
 Division of Critical Care Medicine
 Department of Medicine
 Humber River Regional Hospital
 Toronto, Ontario, Canada

Stéphane Manzo-Silberman, MD

Chief Resident
 Interventional Cardiologist
 Cardiology Department
 Cochin Hospital
 Paris Descartes University
 Paris, France

Paul E. Marik, MD, FCP, FRCPC, FCCM, FCCP

Chief, Pulmonary and Critical Care Medicine
 Eastern Virginia Medical School
 Norfolk, Virginia

John J. Marini, MD

Director of Translational Research
 HealthPartners Research Foundation
 Professor of Medicine
 University of Minnesota
 Minneapolis, Minnesota

Donald W. Marion, MD, MS

Director of Clinical Affairs
 The Defense and Veterans Brain Injury Center
 Walter Reed Army Medical Center
 Washington, DC

Steven J. Martin, PharmD, BCPS, FCCP, FCCM

Professor and Chairman
 Department of Pharmacy Practice
 The University of Toledo
 Toledo, Ohio

Alvaro Martinez-Camacho, MD

Gastroenterology/Hepatology Fellow
 University of Colorado Denver
 Aurora, Colorado

Anne Marie Mattingly, MD

Fellow
 Internal Medicine, Critical Care Division
 University of Rochester
 Rochester, New York

Gary R. Matzke, PharmD, FCP, FCCP, FASN, FNAP

Professor and Associate Dean for Clinical Research and Public Policy
 Director ACCP/ASHP/VCU Congressional Health Care
 Policy Fellow Program
 School of Pharmacy, Virginia Commonwealth
 University—MCV Campus
 Richmond, Virginia

Adeline Max, MD

Medical ICU
 Saint-Louis Hospital
 Paris, France

George V. Mazariegos, MD

Chief Pediatric Transplantation
 Hillman Center for Pediatric Transplantation
 Children's Hospital of Pittsburgh of UPMC
 Professor of Surgery and Critical Care Medicine
 University of Pittsburgh Medical School
 Pittsburgh, Pennsylvania

Joanne Mazzarelli, MD

Fellow, Cardiovascular Diseases
 Cooper University Hospital
 Camden, New Jersey

Stephen A. McClave, MD

Professor of Medicine
 Director of Clinical Nutrition
 Division of Gastroenterology, Hepatology, and Nutrition
 University of Louisville School of Medicine
 Louisville, Kentucky

Ryan M. McEnaney, MD

Division of Vascular Surgery
 University of Pittsburgh Medical Center
 Pittsburgh, Pennsylvania

John K. McIlwaine, DO

Section of Critical Care Medicine
 Department of Anesthesiology
 Dartmouth-Hitchcock Medical Center
 Lebanon, New Hampshire

Michelle K. McNutt, MD

Assistant Professor of Surgery
 Division of Acute Care Surgery
 University of Texas Health Science Center at Houston
 Houston, Texas

Sangeeta Mehta, MD

Associate Professor
 Department of Medicine and Interdepartmental
 Division of Critical Care
 University of Toronto
 Mount Sinai Hospital
 Toronto, Ontario, Canada

Dieter Mesotten, MD, PhD

Professor of Medicine
 Katholieke Universiteit Leuven
 Department of Intensive Care Medicine
 University Hospitals Leuven—Gasthuisberg
 Leuven, Belgium

Kimberly S. Meyer, ACNP-BC, CNRN

Neurotrauma Nurse Practitioner
University of Louisville Hospital—Neurosurgery
Louisville, Kentucky
Neuroscience Clinician
Defense and Veterans Brain Injury Center
Washington, DC

David J. Michelson, MD

Assistant Professor
Department of Pediatrics, Division of Child Neurology
Loma Linda University School of Medicine
Loma Linda, California

Saar Minha, MD

Department of Cardiology
Assaf Harofeh Medical Center and Sackler School of Medicine
Tel Aviv University
Zerifin, Israel

Marek A. Mirski, MD, PhD

Professor and Vice-Chair
Department of Anesthesiology and Critical Care Medicine
Professor of Neurology and Neurosurgery
Johns Hopkins University School of Medicine
Baltimore, Maryland

Rima A. Mohammad, PharmD, BCPS

Assistant Professor of Pharmacy and Therapeutics
Director, Internal Medicine Pharmacy Residency
School of Pharmacy, University of Pittsburgh
Pittsburgh, Pennsylvania

Xavier Monnet, MD, PhD

Professor of Critical Care Medicine
Medical Intensive Care Unit
Bicêtre University Hospital
Paris-South University
Paris, France

Frederick A. Moore, MD, FACS, FCCM

Professor of Surgery
Head, Acute Care Surgery
College of Medicine
University of Florida
Gainesville, Florida

Laura J. Moore, MD, FACS

Assistant Professor
Department of Surgery, Division of Acute Care Surgery
University of Texas
Health Science Center at Houston
Medical Director
Shock Trauma Intensive Care Unit
Memorial Hermann Hospital
Houston, Texas

Anne-Sophie Moreau

Service des Maladies du Sang
Hopital Huriez
CHRU Lille
Lille, France

Delphine Moreau, MD

Medical ICU
Saint Louis Teaching Hospital
Paris, France

Alison Morris, MD, MS

Associate Professor of Medicine, Immunology, and Clinical and
Translational Research
Division of Pulmonary, Allergy, and Critical Care Medicine
University of Pittsburgh
Pittsburgh, Pennsylvania

Amy E. Morris, MD

Clinical Instructor
Pulmonary and Critical Care Medicine
University of Washington
Seattle, Washington

Bruno Mourvillier, MD

Assistant
Medical and Infectious Diseases Intensive Care
Bichat-Claude Bernard Hospital
Paris 7 University
Paris, France

Mark A. Munger, PharmD

Professor and Associate Dean for Academic Affairs
Pharmacotherapy and Internal Medicine
University of Utah
Salt Lake City, Utah

Raghavan Murugan, MD, MS, MRCP(UK)

Assistant Professor
Department of Critical Care Medicine
University of Pittsburgh School of Medicine
Pittsburgh, Pennsylvania

Claus-Martin Muth, MD, PhD

Associate Professor of Anesthesia
Department of Anesthesiology
University Hospital
Ulm University
Ulm, Germany

Kurt G. Naber, MD, PhD

Associate Professor
Technical University Munich
Munich, Germany

Lena M. Napolitano, MD

Professor and Associate Chair
Division Chief, Acute Care Surgery
Department of Surgery
Director, Trauma and Surgical Critical Care
University of Michigan Medical School
Ann Arbor, Michigan

Stanley A. Nasraway, MD, FCCM

Director
Surgical Intensive Care Units
Tufts Medical Center
Professor of Surgery, Medicine, and Anesthesia
Department of Surgery
Tufts University School of Medicine
Boston, Massachusetts

Jovany Cruz Navarro, MD

Baylor College of Medicine
Houston, Texas

Lewis S. Nelson, MD

Associate Professor of Emergency Medicine
 Director, Fellowship in Medical Toxicology
 New York University School of Medicine
 New York, New York

Michael S. Niederman, MD

Chairman, Department of Medicine
 Winthrop-University Hospital
 Professor of Medicine
 Vice-Chairman
 Department of Medicine
 SUNY at Stony Brook
 New York, New York

Jessica C. Njoku, PharmD, BCPS

Infectious Diseases/Antimicrobial Stewardship Fellow
 Nebraska Medical Center
 Omaha, Nebraska

Scott Norwood, MD

Director, Trauma Services
 Department of Surgery
 East Texas Medical Center
 Tyler, Texas

Juan B. Ochoa, MD

Department of Surgery and Critical Care Medicine
 University of Pittsburgh Health System
 Pittsburgh, Pennsylvania

Mark D. Okusa, MD

Chief, Division of Nephrology
 John C. Buchanan Distinguished Professor of Medicine
 University of Virginia
 Charlottesville, Virginia

Keith M. Olsen, PharmD, FCCP, FCCM

Professor and Chair
 Department of Pharmacy Practice
 University of Nebraska Medical Center
 Clinical Manager Education and Research
 Department of Pharmaceutical and Nutrition Care
 The Nebraska Medical Center
 Omaha, Nebraska

Steven M. Opal, MD

Professor of Medicine
 Warren Alpert Medical School of Brown University
 Providence, Rhode Island
 Chief, Infectious Disease Division
 Memorial Hospital of Rhode Island
 Pawtucket, Rhode Island

James P. Orlowski, MD, FAAP, FCCP, FCCM

Division of Pediatrics
 Department of Pediatric Critical Care Medicine
 University Community Hospital
 Department of Pediatrics, Critical Care Medicine, and Medical Ethics
 University of South Florida, Tampa
 Tampa, Florida

Catherine M. Otto, MD

J. Ward Kennedy-Hamilton Endowed Chair of Medicine
 Director, Training Programs in Cardiovascular Disease
 University of Washington
 Associate Director, Echocardiography
 University of Washington Medical Center
 Seattle, Washington

Heleen M. Oudemans-van Straaten, MD, PhD

Department of Intensive Care
 Onze Lieve Vrouwe Gasthuis
 Amsterdam, The Netherlands

Pratik P. Pandharipande, MD, MSCI

Associate Professor
 Anesthesiology Service
 Tennessee Valley Health Care System
 Associate Professor
 Anesthesiology and Critical Care
 Vanderbilt University Medical Center
 Nashville, Tennessee

Joseph E. Parrillo, MD

Professor of Medicine
 Robert Wood Johnson Medical School
 University of Medicine and Dentistry of New Jersey
 Chief, Department of Medicine
 Edward D. Viner MD Chair, Department of Medicine
 Director, Cooper Heart Institute
 Cooper University Hospital
 Camden, New Jersey

David L. Paterson, MD

Professor of Medicine
 University of Queensland Centre for Clinical Research
 Royal Brisbane and Womens Hospital Campus
 Brisbane, Australia

Frédéric L. Paulin, MD, FRCPC

Fellow, Cardiac Electrophysiology
 Libin Cardiovascular Institute of Alberta
 University of Calgary
 Calgary, Alberta, Canada

Andrew B. Peitzman, MD

Mark M. Ravitch Professor and Vice-Chair
 Chief, Division of General Surgery
 University of Pittsburgh
 Pittsburgh, Pennsylvania

Daleen Aragon Penoyer, PhD, RN, CCRP, FCCM

Director, Center for Nursing Research
 Orlando Health
 Orlando, Florida

Bradley Peterson, MD

Medical Director Critical Care
 Associate Director Trauma
 Department of Surgery, Anesthesia, and Critical Care
 UCSD-Rady Children's Hospital
 San Diego, California

Graham F. Pineo, MD

Professor of Medicine Emeritus
Department of Medicine
University of Calgary
Calgary, Alberta, Canada

Michael R. Pinsky, MD, Dr hc

Professor
Critical Care Medicine, Bioengineering, Cardiovascular Diseases,
Anesthesiology, and Clinical & Translational Medicine
University of Pittsburgh
Pittsburgh, Pennsylvania

Greta Piper, MD

Assistant Professor
Department of Surgery
Yale University
New Haven, Connecticut

Didier Pittet, MD, MS

Director
Infection Control Programme and WHO Collaborating Centre
on Patient Safety
University of Geneva Hospitals and Faculty of Medicine
Geneva, Switzerland

†Fred Plum, MD

Murray M. Pollack, MD, MBA

Chief Medical and Academic Officer
Phoenix Children's Hospital
Professor of Pediatrics
University of Arizona School of Medicine
Phoenix, Arizona

Lucido L. Ponce, MD

Department of Neurosurgery
Baylor College of Medicine
Houston, Texas

Robert Pousman, DO

Clinical Associate Professor
Anesthesiology
David Geffen School of Medicine at UCLA
Director, Surgical Intensive Care Unit
Anesthesiology
VA Greater Los Angeles Healthcare System
Los Angeles, California

Peter J. Pronovost, MD, PhD

Professor
Departments of Anesthesiology/Critical Care Medicine, Surgery,
School of Medicine, and Health Policy and Management
Bloomberg School of Public Health
Director, Quality and Safety Research Group
Johns Hopkins University
Baltimore, Maryland

Przemyslaw B. Radwański, PharmD, PhD

Post-Graduate Research Associate
Department of Physiology and Cell Biology
Davis Heart and Lung Research Institute
The Ohio State University
Columbus, Ohio

Thomas G. Rainey, MD, FCCM

President
CriticalMed, Inc.
Bethesda, Maryland

Thomas Rajan, MD

Fellow, Division of Pulmonary Critical Care and Sleep Medicine
Tufts-New England Medical Center
Tufts University School of Medicine
Boston, Massachusetts

Vito Marco Ranieri, MD

Chairman
Department of Anesthesia and Intensive Care Medicine
University of Turin
S. Giovanni Battista Molinette Hospital
Turin, Italy

Konrad Reinhart, MD

Professor
Director
Department of Anesthesiology and Intensive Care Medicine
University Hospital Jena
Jena, Germany

Jorge Reyes, MD

Chief of Pediatric Transplantation
Seattle Children's Hospital
Chief, Division of Transplant Surgery
University of Washington
Seattle, Washington

Andrew Rhodes, MD

Consultant in Intensive Care Medicine
St. George's Hospital
London, United Kingdom

Zaccaria Ricci, MD

Pediatric Intensive Care Unit
Department of Pediatric Cardiology and Cardiac Surgery
Ospedale Bambino Gesù
Rome, Italy

Christian Richard, MD

Professor of Critical Care Medicine
Medical Intensive Care Unit
Bicêtre University Hospital
Paris-South University
Paris, France

John R. Richards, MD

Professor
Emergency Medicine
UC Davis Medical Center
Sacramento, California

John Riordan, MD

Professor of Emergency Medicine
Department of Emergency Medicine
University of Virginia
Charlottesville, Virginia

†Deceased

Arsen D. Ristic, MD, PhD, FESC

Associate Professor of Internal Medicine—Cardiology
 Belgrade University School of Medicine
 Deputy Director, Polyclinic of the Clinical Center of Serbia
 Chief, Interventional Pericardiology and Diseases
 of Pulmonary Circulation
 Department of Cardiology
 Clinical Center of Serbia
 Belgrade, Serbia

Sandro Rizoli, MD, PhD

Associate Professor
 Surgery and Critical Care Medicine
 Sunnybrook Health Sciences Centre
 University of Toronto
 Toronto, Ontario, Canada

Claudia S. Robertson, MD

Professor
 Department of Neurosurgery
 Baylor College of Medicine
 Houston, Texas

Emmanuel Robin, MD, PhD

Department of Anesthesiology and Critical Care
 University Hospital—Nord de France
 Lille, France

Ferran Roche-Campo, MD

Servei de Medicina Intensiva
 Hospital Sant Pau
 Barcelona, Spain

Paul Rogers, MD

Professor, Critical Care Medicine
 Department of Critical Care
 University of Pittsburgh
 Pittsburgh, Pennsylvania

Claudio Ronco, MD

Professor of Medicine
 Director
 Department of Nephrology Dialysis and Transplantation
 International Renal Research Institute
 St. Bortolo Hospital
 Vicenza, Italy

John C. Rotschafer, PharmD, FCCP

Professor
 Department of Experimental and Clinical Pharmacology
 College of Pharmacy
 University of Minnesota
 Minneapolis, Minnesota

Gordon D. Rubinfeld, MD, MSc

Professor of Medicine
 University of Toronto
 Chief, Program in Trauma, Emergency, and Critical Care
 Sunnybrook Health Sciences Center
 Toronto, Ontario, Canada

Lewis J. Rubin, MD, FACP, FRCP, FCCP, FAHA

Professor of Medicine, Emeritus
 University of California San Diego
 La Jolla, California

Randall A. Ruppel, MD

Department of Pediatrics
 St. Vincent's Hospital
 Indianapolis, Indiana

Laura T. Russo, RD, CSP, LDN

Senior PICU Dietitian
 Children's Memorial Hospital
 Chicago, Illinois

Daniel E. Rusyniak, MD

Associate Professor of Emergency Medicine, Pharmacology,
 and Toxicology
 Adjuv Associate Clinical Professor of Neurology
 Indiana University School of Medicine
 Indianapolis, Indiana

Steven A. Sahn, BA, MD

Professor of Medicine and Director
 Medicine, Division of Pulmonary, Critical Care, Allergy, and
 Sleep Medicine
 Medical University of South Carolina
 Charleston, South Carolina

Juan C. Salgado, MD

Pulmonary Transplant Medicine Fellow
 Division of Pulmonary, Allergy, and Critical Care Medicine
 University of Pittsburgh School of Medicine
 Pittsburgh, Pennsylvania

Cristina Santonocito, MD

Anesthesia and Intensive Care Medicine
 University Policlinico of Catania
 Catania, Italy

Penny Lynn Sappington, MD

Assistant Professor
 Department of Critical Care Medicine
 University of Pittsburgh School of Medicine
 Medical Director
 Surgical Intensive Care Unit
 University of Pittsburgh Medical Center
 Pittsburgh, Pennsylvania

John Sarko, MD

Clinical Attending Physician
 Emergency Medicine
 Maricopa Medical Center
 University of Arizona—Phoenix School of Medicine
 Phoenix, Arizona

Richard H. Savel, MD, FCCM

Associate Professor of Clinical Medicine and Neurology
 Division of Critical Care Medicine
 Montefiore Medical Center and the Albert Einstein College
 of Medicine
 Bronx, New York

Irina Savelieva, MD

St. George's Hospital Medical School
 London, United Kingdom

Benoit Schlemmer, MD

Service de réanimation médicale, AP-HP
 Hôpital Saint-Louis
 Université Paris-7 Paris-Diderot
 UFR de Médecine
 Paris, France

Minka Schofield, MD

Assistant Professor
Department of Otolaryngology, Head and Neck Surgery
The Ohio State University Medical Center
Columbus, Ohio

Kristine S. Schonder, PharmD

Clinical Pharmacist
Thomas E. Starzl Transplantation Institute
Assistant Professor
University of Pittsburgh School of Pharmacy
Pittsburgh, Pennsylvania

Anton C. Schoolwerth, MD, MSHA

Professor of Medicine
Section of Hypertension/Nephrology
Dartmouth-Hitchcock Medical Center
Lebanon, New Hampshire

Robert W. Schrier, MD

Professor of Medicine
Department of Medicine
University of Colorado Denver
Aurora, Colorado

Carl Schulman

Director, Critical Care
University of Miami Hospital
Miami, Florida

Evan Schwarz, MD

Fellow in Medical Toxicology
Division of Emergency Medicine
University of Texas Southwestern Medical Center
Dallas, Texas

Aaron M. Scifres, MD

Assistant Professor of Surgery
University of Pittsburgh School of Medicine
Pittsburgh, Pennsylvania

Donna L. Seger, MD

Associate Professor of Medicine and Emergency Medicine
Department of Medicine
Vanderbilt University Medical Center
Medical Director
Tennessee Poison Center
Nashville, Tennessee

Amelie Seguin, MD

Intensive Care Unit
Hopital Saint Louis
Paris, France

Frank W. Sellke, MD, FACS

Karlson and Karlson Professor and Chief of Cardiothoracic Surgery
Alpert Medical School of Brown University
Providence, Rhode Island

Sajid Shahul, MD

Instructor in Anaesthesia
Harvard Medical School
Anesthetist
Beth Israel Deaconess Medical Center
Boston, Massachusetts

M. Khaled Shamseddin, MD, ABIM, FRCPC

Nephrology Fellow
Department of Medicine and Nephrology
Memorial University—Health Science Center
St. John's, Newfoundland, Canada

Erik S. Shank, MD

Assistant Professor of Anesthesia
Harvard Medical School
Boston, Massachusetts
Associate Chief of Pediatric Anesthesia,
Massachusetts General Hospital
Shriners Hospital for Children-Boston
Boston, Massachusetts

Eduard Shantsila

Postdoctoral Research Fellow
University of Birmingham Centre for Cardiovascular Sciences
City Hospital
Birmingham, United Kingdom

Kapil Sharma, MD

Assistant Professor
Division of Emergency Medicine
University of Texas Southwestern Medical Center
Dallas, Texas

Robert L. Sheridan, MD

Assistant Chief of Staff
Shriners Hospital for Children
Attending Surgeon
Burns and Trauma
Massachusetts General Hospital
Associate Professor of Surgery
Harvard Medical School
Boston, Massachusetts

Ariel L. Shiloh, MD

Division of Critical Care Medicine
Montefiore Medical Center and the Albert Einstein College
of Medicine
Bronx, New York

Debra J. Skaar, PharmD

Assistant Professor
Department of Experimental and Clinical Pharmacology
University of Minnesota College of Pharmacy
Minneapolis, Minnesota

Anthony D. Slonim, MD, DrPH

Professor, Internal Medicine and Pediatrics
Virginia Tech Carilion School of Medicine
Vice President, Medical Affairs and Pharmacy
Carilion Medical Center
Roanoke, Virginia

Teresa L. Smith Jacobs, MD

Clinical Assistant Professor
Western Michigan University College of Human Medicine
Neurointensivist
Bronson Memorial Hospital
Kalamazoo, Michigan

Pablo Solís-Muñoz, PhD

Gastroenterologist, Clinical Research Fellow in Hepatology
MMA Grant
Institute of Liver Studies LITU
King's College Hospital
London, United Kingdom

Michael D. Sosin, MD

Nottingham University Hospitals NHS Trust
Nottingham, United Kingdom

Charles L. Sprung, MD

Director, General Intensive Care Unit
Department of Anesthesiology and Critical Care Medicine
Hadassah Hebrew University Medical Center
Jerusalem, Israel

Vincenzo Squadrone, MD

Università di Torino
Dipartimento di discipline Medico-Chirurgiche
Sezione di Anestesiologia e Rianimazione
Ospedale S. Giovanni Battista
Torino, Italy

Thomas E. Starzl, MD, PhD

Department of Surgery
Division of Transplant Surgery
University of Pittsburgh School of Medicine
Pittsburgh, Pennsylvania

Steven M. Steinberg, MD

Professor of Surgery
Director, Division of Critical Care, Trauma, and Burn
Vice Chairman for Clinical Affairs
Department of Surgery
The Ohio State University
Columbus, Ohio

David M. Steinhorn, MD

Professor of Pediatrics
Northwestern University Feinberg School of Medicine
Division of Pulmonary and Critical Care Medicine
Children's Memorial Hospital
Chicago, Illinois

Eric J. Stern, MD

Vice Chair, Academic Affairs
Professor of Radiology, Medicine, Medical Education and
Bioinformatics, and Global Health
University of Washington
Seattle, Washington

Thomas E. Stewart, MD

Chief of Medicine
Mount Sinai Hospital
University of Toronto
Toronto, Ontario, Canada

Nino Stocchetti, MD

Milan University
Neuroscience ICU
Fondazione IRCCS Cà Granda—Ospedale Policlinico
Milan, Italy

Joerg-Patrick Stübgen, MB, ChB, MD

Professor of Clinical Neurology
Department of Neurology and Neuroscience
Weill Medical College of Cornell University
Associate Attending Neurologist
The New York-Presbyterian Hospital and Hospital for Special
Surgery
New York, New York

Sanjay Subramanian, MD

Department of Hospital Medicine
The Everett Clinic
Everett, Washington

Justin Szawlewicz, MD

Cardiology Fellow
Cooper University Hospital
Camden, New Jersey

David Szpilman, MD

Hospital Municipal Miguel Couto—Head of Adult Intensive Care
Unit
Retire Head of Drowning Resuscitation Center—GMAR—CBMERJ
Medical director, Founder and Ex-President of Brazilian Life Saving
Society—SOBRASA
Medical Commission International Life-Saving Federation
Brazilian Resuscitation Council Member
Rio de Janeiro, Brazil

David P. Taggart, MD (Hons), PhD, FRCS

Professor of Cardiovascular Surgery
University of Oxford
Consultant Cardiothoracic Surgeon
John Radcliffe Hospital
Oxford, United Kingdom

Daniel Talmor, MD

Associate Professor of Anesthesia
Beth Israel Deaconess Medical Center
Boston, Massachusetts

Jean-Louis Teboul, MD, PhD

Professor of Therapeutics and Critical Care Medicine
Medical Intensive Care Unit
Bicêtre University Hospital
Paris-South University
France

Isaac Teitelbaum, MD

Professor of Medicine
University of Colorado School of Medicine
Director, Acute and Home Dialysis Programs
University of Colorado Hospital
Aurora, Colorado

Stephen R. Thom, MD, PhD

Professor of Emergency Medicine
Chief of Hyperbaric Medicine
Institute for Environmental Medicine
University of Pennsylvania
Philadelphia, Pennsylvania

C. Louise Thwaites, MBBS, BSc, MD

Specialist in Musculoskeletal Medicine
Horsham United Kingdom

Jean-François Timsit, MD

Director
Medical ICU
Hôpital A. Michallon
Grenoble, France

Alan Tinmouth, MD, Msc(Clin epi), FRCPC

Assistant Professor
University of Ottawa
Division of Hematology
Head, General Hematology and Transfusion Medicine
Ottawa Hospital
Clinical Epidemiology Program
Ottawa Hospital Research Institute
Ottawa, Ontario, Canada

Samuel A. Tisherman, MD, FACS, FCCM

Professor, Departments of Critical Care Medicine and Surgery
Attending Physician
University of Pittsburgh Medical Center
University of Pittsburgh School of Medicine
Pittsburgh, Pennsylvania

S. Rob Todd, MD

Associate Professor of Surgery
Director, Bellevue Emergency Surgery Services
New York University
Langone Medical Center
New York, New York

Antoni Torres, Sr., MD, PhD

Professor of Medicine
University of Barcelona
Director, Respiratory Intensive Care Unit
Institut Clínic del Tòrax
Hospital Clínic Barcelona, Spain
Institut D'investigacions Biomèdiques August Pi i Sunyer
Centro de Investigación Biomedica en Red
Enfermedades Respiratorias
Barcelona, Spain

Robert D. Truog, MD

Professor of Medical Ethics, Anesthesia, and Pediatrics
Social Medicine and Global Health
Harvard Medical School
Senior Associate in Critical Care Medicine
Anesthesiology and Critical Care Medicine
Children's Hospital Boston
Boston, Massachusetts

Krista Turner, MD

Assistant Professor
Division of Acute Care Surgery
Department of Surgery
Weill Medical College of Cornell University, The Methodist Hospital
Houston, Texas

Edith Tzeng, MD

Associate Professor of Surgery
Division of Vascular Surgery
Department of Surgery
University of Pittsburgh
Pittsburgh, Pennsylvania

Nir Uriel, MD

Division of Cardiology
Columbia University Medical Center
New York, New York

Benoit Vallet, MD, PhD

Professor and Chairman
Department of Anesthesiology and Critical Care
University Hospital—Nord de France
Lille, France

Greet Van den Berghe, MD, PhD

Professor of Medicine
Katholieke Universiteit Leuven
Head Department of Intensive Care Medicine
University Hospitals Leuven—Gasthuisberg
Leuven, Belgium

P. Vernon van Heerden, MBBCh, MMed(Anaes), PhD, DA(SA), FFARCSI, FANZCA, FCICM

Senior Staff Specialist
Department of Intensive Care
Sir Charles Gairdner Hospital
Clinical Professor
School of Medicine and Pharmacology
University of Western Australia
Perth, Western Australia, Australia

Benjamin W. Van Tassell, PharmD, BCPS

Assistant Professor of Pharmacy
Virginia Commonwealth University
Richmond, Virginia

Frédéric Vanden Eynden, MD

Cardiac Surgeon
Department of Cardiac Surgery
Hôpital Erasme
Brussels, Belgium

Olivier Varenne, MD, PhD

Associate Director, Cardiac Catheterization Laboratory
Cardiology Department
Cochin Hospital
Rene Descartes University
Paris, France

Ramesh Venkataraman, MD

Consultant, Critical Care Medicine
Chennai Critical Care Group
Apollo Hospitals
Chennai, India

Kathleen M. Ventre, MD

Assistant Professor
Critical Care Medicine
The Children's Hospital
Department of Pediatrics
University of Colorado
Aurora, Colorado

Zvi Vered, MD, FACC, FESC

Professor of Cardiology
Director
Department of Cardiology
Assaf Harofeh Medical Center
Sackler School of Medicine
Tel Aviv University
Zerifin, Isreal

Jean-Louis Vincent, MD, PhD

Professor of Intensive Care Medicine
 Université Libre de Bruxelles
 Head, Department of Intensive Care
 Erasme University Hospital
 Brussels, Belgium

Elizabeth A. Vitarbo, MD

Assistant Professor
 Department of Neurological Surgery and School of Medicine
 University of Florida
 Jacksonville, Florida

Louis Voigt, MD

Assistant Professor of Medicine
 Weill Medical College of Cornell University
 Assistant Attending Physician
 Anesthesiology and Critical Care Medicine
 Memorial Sloan Kettering Cancer Center
 New York, New York

Florian M.E. Wagenlehner, MD, PhD

Professor of Urology
 Clinic for Urology, Pediatric Urology, and Andrology
 Justus-Liebig-University
 Giessen, Germany

Christina J. Wai, MD

Chief Resident
 Department of Surgery
 Tufts Medical Center
 Boston, Massachusetts

Keith R. Walley, MD

Professor of Medicine
 Division of Critical Care Medicine
 University of British Columbia
 Vancouver, British Columbia, Canada

Nicholas S. Ward, MD

Assistant Professor, Department of Medicine
 Brown University School of Medicine
 Department of Pulmonary and Critical Care Medicine
 Rhode Island Hospital
 Providence, Rhode Island

Lorraine B. Ware, MD

Associate Professor of Medicine
 Division of Allergy, Pulmonary, and Critical Care Medicine
 Department of Medicine
 Vanderbilt University
 Nashville, Tennessee

Robert J. Weber, PharmD, MS, BCPS, FASHP

University of Pittsburgh School of Pharmacy
 Thomas E. Starzl Transplantation Institute
 University of Pittsburgh School of Medicine
 Pittsburgh, Pennsylvania

Lawrence R. Wechsler, MD

Professor and Chief
 Department of Neurology
 Vice President for Telemedicine, PSD
 University of Pittsburgh School of Medicine
 Pittsburgh, Pennsylvania

David Weill, MD

Medical Director
 Lung and Heart-Lung Transplant Program
 Division of Pulmonary and Critical Care Medicine
 Stanford University
 Stanford, California

Craig R. Weinert, MD, MPH

Associate Professor of Medicine
 Division of Pulmonary, Allergy, Critical Care, and Sleep Medicine
 University of Minnesota
 Minneapolis, Minnesota

Julia Wendon, MBChB, FRCP

Institute of Liver Studies
 Kings College Hospital
 London, United Kingdom

Michel Wolff, MD

Head
 Medical and Infectious Diseases Intensive Care
 Bichat-Claude Bernard Hospital
 Paris 7 University
 Paris, France

Benjamin Wrigley

University of Birmingham Centre for Cardiovascular Sciences
 City Hospital
 Birmingham, United Kingdom

Richard G. Wunderink, MD

Professor of Medicine
 Pulmonary and Critical Care Division
 Northwestern University Feinberg School of Medicine
 Director, Medical Intensive Care Unit
 Northwestern Memorial Hospital
 Chicago, Illinois

Lam M. Yen

Director, Tetanus Unit
 Hospital for Tropical Diseases
 Ho Chi Minh City, Vietnam

Sergio L. Zanotti-Cavazzoni, MD, FCCM

Director, Fellowship Program
 Division of Critical Care Medicine
 Assistant Professor
 Department of Medicine
 Cooper University Hospital
 Camden, New Jersey

Allyson R. Zazulia, MD

Associate Professor of Neurology and Radiology
 Washington University
 Saint Louis, Missouri

Janice Zimmerman, MD

Head of Critical Care Section
 Department of Medicine
 The Methodist Hospital
 Professor of Clinical Medicine
 Department of Medicine
 Weill Cornell Medical College
 Houston, Texas

Walter Zingg, MD

Infection Control Program
 University of Geneva Hospitals
 Geneva, Switzerland

CONTRIBUTORS, ONLINE CHAPTERS

Louis H. Alarcon, MD

Medical Director, Trauma Surgery
University of Pittsburgh Medical Center-PUH
Associate Professor of Surgery and Critical Care Medicine
University of Pittsburgh
Pittsburgh, Pennsylvania
W10 Paracentesis and Diagnostic Peritoneal Lavage (DPL)

Luke Aldo, MD

Hartford Hospital
Department of Anesthesiology and Critical Care Medicine
University of Connecticut School of Medicine
Farmington, Connecticut
W1 Difficult Airway Management for Intensivists

Massimo Antonelli, MD

Professor of Intensive Care and Anesthesiology
Director, General Intensive Care Unit
Policlinico Universitario
A. Gemelli, Università Cattolica del Sacro Cuore
Editor in Chief of Intensive Care Medicine
Rome, Italy
W13 Fiberoptic Bronchoscopy

Barbara L. Bass, MD

The Methodist Hospital
Weill Cornell Medical College
New York, New York
W23 Bedside Laparoscopy in the ICU

Sarice L. Bassin, MD

Assistant Professor of Neurology
Neurological Surgery and Anesthesiology
Program Director, Neurocritical Care Fellowship
Northwestern University
Feinberg School of Medicine
Chicago, Illinois
W18 Lumbar Puncture
W20 Intracranial Pressure Monitoring

Yanick Beaulieu, MD

Division of Cardiology and Critical Care Medicine
Hôpital Sacré Coeur de Montréal
Université de Montréal
Montreal, Québec, Canada
W2 Bedside Ultrasonography

Giuseppe Bello, MD

Assistant Professor of Intensive Care and Anesthesiology
General Intensive Care Unit
Policlinico Universitario
A Gemelli, Università Cattolica del Sacro Cuore
Rome, Italy
W13 Fiberoptic Bronchoscopy

Cherisse Berry, MD

Cedars Sinai Medical Center
Los Angeles, California
W15 Percutaneous Dilatational Tracheostomy

Thomas P. Bleck, MD, FCCM

Professor of Neurological Sciences, Neurosurgery, Medicine, and
Anesthesiology
Assistant Dean, Rush Medical College
Associate Chief Medical Officer, Critical Care
Rush University Medical Center
Chicago, Illinois
W18 Lumbar Puncture
W20 Intracranial Pressure Monitoring

Jonathan D. Cohen, MD

Department of General Intensive Care
Rabin Medical Center
Beilinson Hospital
Kaplan St. Petah Tiqva, Israel
W21 Indirect Calorimetry

Gulnur Com, MD

Assistant Professor of Pediatrics
University of Arkansas for Medical Sciences
Arkansas Children's Hospital
Little Rock, Arkansas
W24 Pediatric Intensive Care Procedures

Jovany Cruz, MD

Baylor College of Medicine
Houston, Texas
W19 Jugular Venous and Brain Tissue Oxygen Tension Monitoring

Peter Doelken, MD

Associate Professor of Medicine
Medical University of South Carolina
Department of Medicine
Division of Pulmonary, Critical Care, Allergy, and Sleep Medicine
Charleston, South Carolina
W11 Thoracentesis

Howard R. Doyle, MD

Albert Einstein College of Medicine
Bronx, New York
W16 Esophageal Balloon Tamponade

Brian K. Eble, MD

Assistant Professor of Pediatrics
University of Arkansas for Medical Science
Arkansas Children's Hospital
Little Rock, Arkansas
W24 Pediatric Intensive Care Procedures

Lillian L. Emlet, MD, MS, FACEP

University of Pittsburgh Medical Center
Department of Critical Care Medicine
Department of Emergency Medicine
Pittsburgh, Pennsylvania
*W14 Bronchoalveolar Lavage and Protected Specimen
Bronchial Brushing*

Raúl J. Gazmuri, MD, PhD, FCCM

Rosalind Franklin University of Medicine and Science and Captain
James A. Lovell Federal Health Care Center
Chicago, Illinois

W6 Cardioversion and Defibrillation

W7 Transvenous and Transcutaneous Cardiac Pacing

Shankar Gopinath, MD

Baylor College of Medicine
Houston, Texas

W19 Jugular Venous and Brain Tissue Oxygen Tension Monitoring

John Gorcsan III, MD, FACC, FAHA, FACP, FASE

Professor of Medicine
Director of Echocardiography
University of Pittsburgh
Pittsburgh, Pennsylvania

W2 Bedside Ultrasonography

Y. Gozal, MD

Associate Professor of Anesthesiology
Hebrew University-Hadassah Medical School
Chair, Department of Anesthesiology, Perioperative Medicine, and
Pain Treatment

Director, Operating Rooms
Shaare Zedek Medical Center
Jerusalem, Israel

W4 Arterial Cannulation and Invasive Blood Pressure Measurement

Brian G. Harbrecht, MD

Professor of Surgery
University of Louisville
Louisville, Kentucky

W12 Chest Tube Placement, Care, and Removal

J. Terrill Huggins, MD

Assistant Professor of Medicine
Medical University of South Carolina
Department of Medicine
Division of Pulmonary, Critical Care, Allergy, and Sleep Medicine
Charleston, South Carolina

W11 Thoracentesis

Robert L. Kormos, MD

University of Pittsburgh Physicians
Department of Cardiothoracic Surgery
Division of Cardiac Surgery
Pittsburgh, Pennsylvania

W8 Ventricular Assist Devices

Phillip D. Levin, MA, MB, BChir

Attending Physician
Anesthesia and Critical Care Medicine
Hadassah Hebrew University Medical Center
Jerusalem, Israel

W4 Arterial Cannulation and Invasive Blood Pressure Measurement

Stefano Maggolini, MD

Cardiovascular Department
AO Ospedale di Lecco
Ospedale San Leopoldo Mandic
Merate (LC), Italy

W9 Pericardiocentesis

Daniel R. Margulies, MD

Cedars Sinai Medical Center
Los Angeles, California

W15 Percutaneous Dilatational Tracheostomy

Bartley Mitchell, MD

Baylor College of Medicine
Houston, Texas

W19 Jugular Venous and Brain Tissue Oxygen Tension Monitoring

Deepika Mohan, MD, MPH

Department of Critical Care Medicine
University of Pittsburgh
Pittsburgh, Pennsylvania

W17 Naso-Enteric Feeding Tube Insertion

Laura J. Moore, MD

The Methodist Hospital
Weill Cornell Medical College
New York, New York

W23 Bedside Laparoscopy in the ICU

Thomas C. Mort, MD

Senior Associate, Anesthesiology
Associate Director, Surgical Intensive Care Unit
Hartford Hospital
Associate Professor of Anesthesiology and Surgery
University of Connecticut
Hartford, Connecticut

W1 Difficult Airway Management for Intensivists

Michele Moss, MD

Professor and Vice Chair of Pediatrics
University of Arkansas for Medical Sciences
Arkansas Children's Hospital
Little Rock, Arkansas

W24 Pediatric Intensive Care Procedures

Judith Pepe, MD

Associate Professor of Surgery
University of Connecticut School of Medicine
Farmington, Connecticut
Associate Director
Surgical Critical Care
Hartford Hospital
Hartford, Connecticut

W3 Central Venous Catheterization

Lucido Ponce, MD

Baylor College of Medicine
Houston, Texas

W19 Jugular Venous and Brain Tissue Oxygen Tension Monitoring

Claudia S. Robertson, MD

Baylor College of Medicine
Houston, Texas

W19 Jugular Venous and Brain Tissue Oxygen Tension Monitoring

Santhosh Sadasivan, MD

Baylor College of Medicine
Houston, Texas

W19 Jugular Venous and Brain Tissue Oxygen Tension Monitoring

Steven A. Sahn, MD

Professor of Medicine and Division Director
Medical University of South Carolina
Department of Medicine
Division of Pulmonary, Critical Care, Allergy, and Sleep Medicine
Charleston, South Carolina

W11 Thoracentesis

Penny Lynn Sappington, MD

University of Pittsburgh Medical Center
Pittsburgh, Pennsylvania
W22 Extracorporeal Membrane Oxygenation (ECMO) Cannulation

Professor P. Singer, MD

Chairman, Department of Anesthesiology and Intensive Care
Sackler School of Medicine, Tel-Aviv University
Critical Care Medicine and
Institute for Nutrition Research
Rabin Medical Center
Beilinson Hospital
Petah Tikva, Israel
W21 Indirect Calorimetry

Joseph F. Sucher, MD

The Methodist Hospital
Weill Cornell Medical College
New York, New York
W23 Bedside Laparoscopy in the ICU

Fabio S. Taccone, MD

Erasme Hospital
Free University of Brussels
Brussels, Belgium
W20 Intracranial Pressure Monitoring

S. Rob Todd, MD

The Methodist Hospital
Weill Cornell Medical College
New York, New York
W23 Bedside Laparoscopy in the ICU

Jean-Louis Vincent, MD, PhD

Professor of Intensive Care Medicine
Université Libre de Bruxelles
Head, Department of Intensive Care
Erasme University Hospital
Brussels, Belgium
W5 Bedside Pulmonary Artery Catheterization
W20 Intracranial Pressure Monitoring

Giovanni Vitale, MD

Department of Anesthesia
Ospedale San Gerardo
Monza Italy
Felice Achilli
Cardiovascular Department
AO Ospedale di Lecco
Ospedale Alessandro Manzoni
Lecco, Italy
W9 Pericardiocentesis

Gregory A. Watson, MD

Assistant Professor of Surgery and Critical Care
University of Pittsburgh
Pittsburgh, Pennsylvania
W12 Chest Tube Placement, Care, and Removal

PREFACE

The sixth edition of *Textbook of Critical Care* continues the tradition of excellence established by earlier editions and builds on the success of new features and format changes that were introduced in the fifth edition. Several features of this new edition, such as that it is published in full color, deserve special emphasis. New color illustrations and clinical photographs offer outstanding visual guidance. A list of key points at the conclusion of each chapter will help readers remember the “take-home” messages for that topic.

The opening section comprises short chapters that provide a brief overview of clinical problems such as acute respiratory failure or diarrhea that are commonly encountered in the management of patients with critical illness.

The way this edition covers the basic science underlying the practice of critical care is also different from the previous edition, where it was contained in a separate section. Given the expanded volume of information that has necessitated increased depth related to the clinical practice of critical care, the editors have elected to integrate essential basic science information within the individual chapters rather than discuss it separately.

Because critical care medicine is now a mature specialty practiced all over the world, the experts selected to write chapters for the sixth edition are an international group. New pediatric coverage is also international in scope and addresses key topics within each area of pediatric critical care that are germane to our broader readership.

This edition still contains extensive citations to medical literature, but both the bulk and cost of the text have been decreased by providing extended reference lists on the companion website. The references are linked to Medline or directly to full-text articles where available, which will help expand your search capabilities. Each printed chapter still contains the most important references expanded by author annotation to point out their particular insights.

One of the most user-friendly and critically lauded features of the previous edition was the dedicated companion website. The premium website that accompanies the new edition has also been greatly enhanced. In addition to full text, references, and an index that are fully searchable, new features such as hyperlinked references, critical care calculators, and an image library are offered as well. All illustrations can be downloaded to PowerPoint to enhance your presentations or lectures. The most exciting feature of the website is a dedicated section on critical care procedures. All procedural chapters have been streamlined for online presentation, and most are accompanied by video clips to complement the text and offer visual guidance on how to perform a wide variety of procedures.

The sixth edition of this textbook would not have been possible without the enormous contributions made by the prior editors. We express our gratitude to Will Shoemaker, Steve Ayers, Ake Grenvik, and Peter Holbrook for the opportunity and great honor to follow in their footsteps.

We are indebted to numerous people, including our contributors, colleagues, and staff, who were instrumental in helping us assemble the text you are now holding in your hands.

Jean-Louis Vincent, MD, PhD

Edward Abraham, MD

Frederick A. Moore, MD, FACS, FCCM

Patrick M. Kochanek, MD, FCCM

Mitchell P. Fink, MD